



Wesley Place
Stapleford, Nottingham NG9 8DP

£180,000 Freehold

A TWO DOUBLE BEDROOM SEMI DETACHED HOUSE OFFERED FOR SALE AS AN INVESTMENT OPPORTUNITY WITH TENANT IN-SITU PAYING £700 PCM. OR WITH VACANT POSSESSION TO MAKE A GREAT FIRST HOME



A TWO BEDROOM SEMI DETACHED HOUSE OFFERED FOR SALE AS AN INVESTMENT OPPORTUNITY WITH TENANT IN-SITU PAYING £700 PCM. OR ALTERNATELY CAN BE SOLD WITH VACANT POSSESSION MAKING AN IDEAL FIRST HOME

This property has been well maintained and in a good overall condition with features including gas central heating from a combination boiler, double glazed windows and has had a roof replacement in recent times. Further features include gated off street parking and easy to maintain landscaped rear gardens.

The accommodation comprises entrance hall, lounge and open plan dining kitchen. First floor to two double bedrooms and bathroom/w.c. The property is conveniently situated within walking distance of Stapleford town centre and all the amenities offered therein as well as the recently opened Aldi and a regular bus service linking Nottingham and Derby as well as Beeston, Nottingham University and Queens Medical Centre.



Entrance Hall

Double glazed front entrance door, radiator, stairs to first floor. Door to:

Lounge

13'4" x 12'0" approx (4.08m x 3.67m approx)

Radiator, understairs store cupboard housing gas combination boiler (for central heating and hot water). Double glazed bay window to the front.

Dining Kitchen

15'3" x 10'1" approx (4.67m x 3.08m approx)

Incorporating a fitted range of wall, base and drawer units with roll edged work surfacing and inset 1 1/2 bowl stainless steel sink unit with single drainer. Gas cooker point, plumbing for washing machine, appliance space. Radiator, double glazed window and door to rear.

First Floor Landing

Double glazed window, doors to:

Bedroom 1

13'6" into bay x 12'0" approx (4.13m into bay x 3.67m approx)

Ornate cast iron fireplace, recess over stairs housing shower cubical, radiator, double glazed bay window to the front.

Bedroom 2

7'9" x 7'6" approx (2.38m x 2.29m approx)

Radiator, double glazed window to the rear.

Bathroom

8'9" x 6'11" approx (2.69m x 2.11m approx)

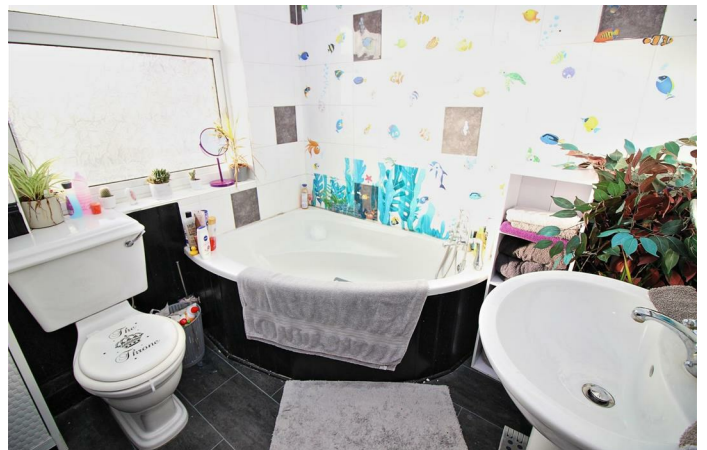
Three piece suite comprising wash hand basin, low flush w.c. and corner bath with mixer shower attachment over. Partially tiled walls, double glazed window.

Outside

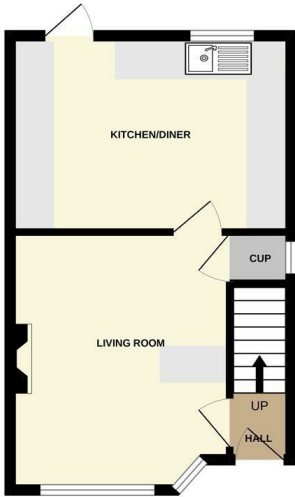
The property is set back from the road with a walled and fenced in front garden with wrought iron gates leading to off street parking. There is a shared open drive at the side of the property. The rear garden is enclosed, landscaped with ease of maintenance in mind with patio, area laid to artificial lawn and garden shed.

Directions

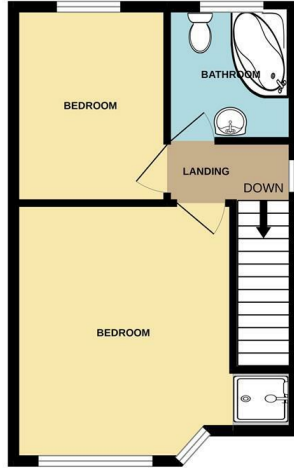
From our Stapleford branch on Derby Road proceed to The Roach traffic lights. Continue over to Nottingham Road. Immediately after the Aldi supermarket turn left onto Pinfold Lane and turn immediately right onto Wesley Place. Continue along the road where the property can be found on the left hand side identified by our for sale board.



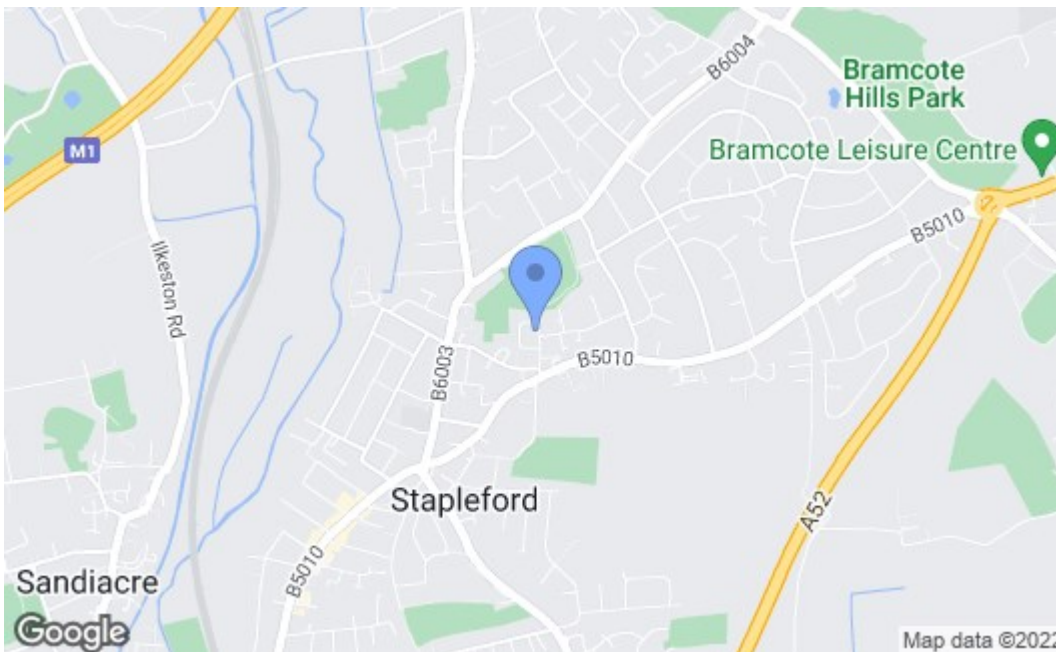
GROUND FLOOR



1ST FLOOR



Whilst every attempt has been made to ensure the accuracy of the floorplan contained here, measurements of doors, windows, rooms and any other items are approximate and no responsibility is taken for any error, omission or mis-statement. This plan is for illustrative purposes only and should be used as such by any prospective purchaser. The services, systems and appliances shown have not been tested and no guarantee as to their operability or efficiency can be given.
Made with Meropix ©2022



Energy Efficiency Rating		Current	Potential
Very energy efficient - lower running costs			
(92 plus) A			
(81-91) B			
(69-80) C			
(55-68) D		58	80
(39-54) E			
(21-38) F			
(1-20) G			
Not energy efficient - higher running costs			
England & Wales		EU Directive 2002/91/EC	
Environmental Impact (CO ₂) Rating		Current	Potential
Very environmentally friendly - lower CO ₂ emissions			
(92 plus) A			
(81-91) B			
(69-80) C			
(55-68) D			
(39-54) E			
(21-38) F			
(1-20) G			
Not environmentally friendly - higher CO ₂ emissions			
England & Wales		EU Directive 2002/91/EC	

These details are for guidance only and complete accuracy cannot be guaranteed. If there is any point, which is of particular importance, verification should be obtained. All measurements are approximate. No guarantee can be given with regard to planning permissions or fitness for purpose. No apparatus, equipment, fixture or fitting has been tested.